

# Tidewater Woodworkers Guild



## Notes from the Wood House

Hello woodworkers, and welcome to another great month of woodworking. Just a reminder, **this month's meeting is WEDNESDAY, May 27<sup>th</sup>.**

I hope all of you have made time to get out in your shops during this period of nice weather we have experienced the past few weeks. I look forward to this month's "show & tell" where some of you will delight us with some of your most recent projects.

What a wonderful presentation we had last month. We were very privileged to have Mr. Nelson Arnold, a local antique dealer and retired banker, join us. He gave us an exceptional presentation and history of local cabinet-makers and furniture made in the Norfolk style, dating from the late 1700's, through the American Revolution, into the 1840's, through the "War of Northern Aggression," as Nelson calls it, and up to the

present. Thank you to John Moore for arranging this wonderful presentation.

As I mentioned last month, we have a couple events coming up in the future, the U.S. Marine Corps Toys for Tots program and our annual holiday dinner. We are looking for a couple volunteers to head up these events, and if needed put together a small group of folks to help set up and arrange these for our club. Please see Jim or myself if you are interested.

Ed Bunker hosted another band saw tune-up class at the Norfolk Senior Center a few weeks ago. Seven of our members attended and I hear all had a pretty good time. I want to thank Ed and the Senior Center for offering up their time and facilities and allowing us hold this training. If you would like training on a particular tool or procedure, please see Jim Francis with

your request. We are attempting to get some other training classes put together. Also, keep in mind that for training classes we will need someone to conduct the training and somewhere to hold the training. We are very open to your suggestions.

This month's presentation is from member Shawn Nystrom, who will talk to us about shop electricity. I am sure it will be a very good and informative presentation for all of us.

See you all at the meeting!

### Wood Chips

One of our members, Phil Cary has been under the weather of late. If you would, please keep him in your thoughts. We look forward to him having a speedy recovery and joining our ranks again.

We will update the Guild as we receive an updated status.

**May 2009  
Issue**

### Next Meeting

**May 27, 2009  
7:00PM**

Woodcraft of Norfolk  
5802 E. Virginia Beach Blvd.  
Norfolk, VA 23502  
(757) 466-1166

Monthly Meeting  
4th Monday of Each  
Month

**Find Us On the Web  
[www.twwwg.com](http://www.twwwg.com)**

Please note that parts of the site are password protected. The password is provided to those whose dues are current.

### Club Dues

Dues are \$15.00 per year and are payable by check or cash.

## Upcoming Meetings

Jim Francis will be coordinating presenters and demonstrators each month. If you know of someone that would be a good presenter or if you would like to demonstrate your talents, please contact Jim Francis.

May	June
Guest Presenter	Guest Presenter
Shawn Nystrom	Dean Derby
Shop Electricity	Furniture Caning

## The Executive Board

<b>Bret Lancaster</b>	<b>President</b>	<b>631-0634</b>
<b>Jim Frances</b>	<b>Vice President</b>	<b>595-9041</b>
<b>Adrian Marshall</b>	<b>Secretary</b>	<b>877-2710</b>
<b>Fred Olds</b>	<b>Treasurer</b>	<b>486-3862</b>
<b>Andy Steinberg</b>	<b>Past President</b>	<b>285-3575</b>

**Contributors Wanted:** We are looking for articles for our monthly newsletter like an article on a shop tip or technique, a review about a tool or product or a woodworking event. Send it to [patron300@cox.net](mailto:patron300@cox.net).

## Shop Tips and Tidbits

### Band Saw Extras at Woodcraft

I recently attended a guild meeting that highlighted band saw use. I have to say that the content and presentation were excellent. It covered topics such as resawing, adjusting for drift, fine tuning your saw, and blade selection to name a few. I learned years ago how to set the fence on my band saw to allow for drift. That technique was demonstrated and I proudly thought you were a "cutting edge woodworker" if you used that method. Not necessarily true.

Let me explain. I attended the woodworkers show in Charlotte as I do annually just a few weeks after the Guild meeting. Carter tools had a booth there with a demonstrator. Carter is the company who makes the expensive blade guides and blade tensioner as well as many other accessories including blades. Thank goodness the Powermatic 14" I purchased a few years ago from Sandy at Woodcraft already had the tensioner installed. It is an awesome saw too incidentally ! Thanks Sandy for the recommendation.

Anyway, what I saw at that booth changed my whole perspective on blades and guides. Let me explain. Carter has a relatively new resaw blade That does not drift and therefore needs no adjustment for it. The demonstrator used a magnetic fence rather than the stock fence and initially set it parallel with the table. He did not adjust for drift in any way and achieved perfect results resawing a 8" high piece of pine approximately 18" long and 1/8 " thick. To further impress us he then took the fence 1/4 inch out of parallel on the feed side and again .. Perfect results ! Measured with a micrometer, the stock was the same thickness on all 4 corners. So much for my "cutting edge woodworker" status !

Remember the questions about setting the blade guides on a 1/4 or 3/16 inch blade. How much of the blade do you/can you set between the rear bearings ? Carter had an answer for that also. They have a retrofit guide for small blades that is amazing. It consists of a single bearing with a very slight groove to center the blade. With their guide you can flex "their Blade" almost 90 degrees without worrying about blade breakage or heating.

The demonstrator cut a 3/8 diameter circle in an upright 2 x 4, held it up and the "dowel" fell out of the center of the wood. He demonstrated cutting intricate designs in hardwood without concern for blade breakage or heating that were amazing. I hustled over to my Woodcraft store and purchased the Carter guide and a 3/16" blade, unfortunately not Carter. Where are your Carter blades guys? It was an amazing transformation. You can bend the blade back and forth getting those scroll saw effects and cut unbelievable tight curves even without the Carter blade.

My suggestion to Woodcraft: refit a saw with the Carter guide and blade and demonstrate it at a Guild meeting. Also stock the blades, especially the resaw and 3/16th. On my way back up 85 I stopped at Woodworkers supply of NC. They don't even hold a candle to woodcraft ! Inventory, and staff are exceptional here.

**Submitted by Shawn Nystrom**, 6 month Guild member.

PS: order extra as you might just sell out.

## April 2009 Meeting Minutes

The meeting was called to order on 4 / 27 /09 , at 7 pm by the president, Bret Lancaster.

Announcements Bret announced that next months meeting would be Wednesday May 27 because of Memorial Day. VP Jim Francis talked about future meetings. Bill Caillet talked about future training classes and that Powermatic saws would be on sale May 1- 15th

After a short introduction and recognition of two 1<sup>st</sup> time visitors, John Moore introduced the featured presenter.

Presenter Nelson Arnold- Program History of Norfolk Antique Furniture

Show and Tell

Due to the length of the presentation, there was no "Show and Tell" for the April meeting. We encourage everyone to bring their items to the May meeting.

Old Business- None

New Business. - Motion to change future May meetings to the fourth Wednesday in May, motion carried.

There being no further business the meeting adjourned at 9:11 pm

Submitted

Adrian Marshall / Secretary

## Band Saw Tune-Up Class

Since last month, a second session of the Band Saw tune-up class was conducted on May 9th. It was attended by Ron Prezioso, Frank Pogue, Lou Henry, Scott Paris, Pat Taylor, Cory Larson, and Jim Francis!

Not only did we have bagels and cream cheese with fresh coffee, but the class was treated with the demo on a 1939 Walker-Turner 14" band saw. Taking the time to tune-up this 70 year old band saw was a true pleasure. It is now fitted with a Lenox bi-metallic 3/4", three teeth per inch re-saw blade, and its performance truly equals today's band saws.

Since interest does not seem to be waning for this type of training, the Guild has the opportunity to sponsor another class. If you are interested, please contact Ed Bunker at the May meeting or you can reach him at home at 567-1421.

## Program Highlights From Our April 2009 Meeting

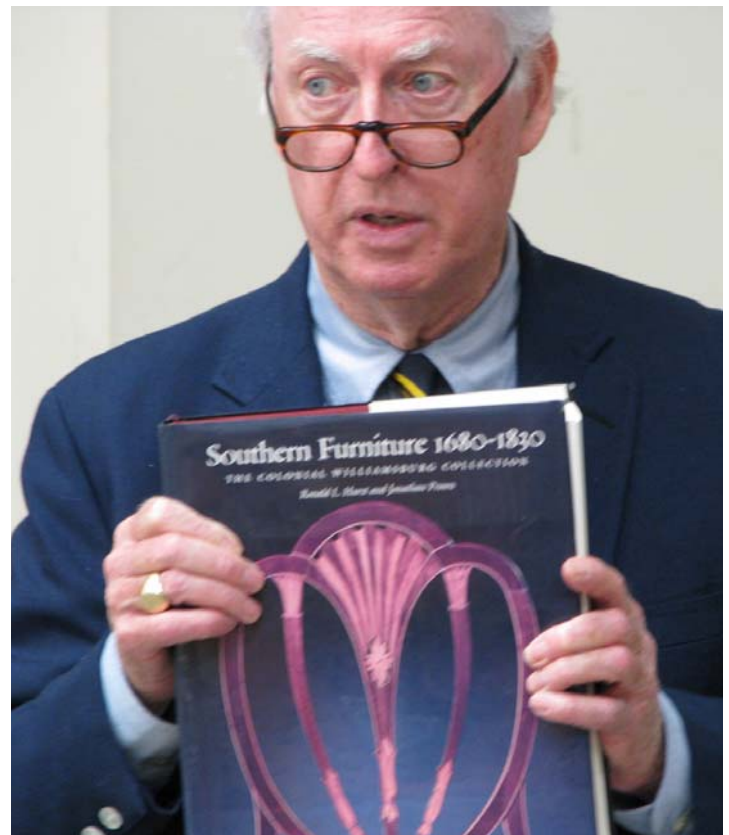


Last month, Nelson Arnold, provided the Guild with an informative overview of Norfolk Furniture. For those of you unaware, Norfolk, like most major port cities on the East Coast, had its own style of furniture. Due to the “War of Northern Aggression”, after 1850, much of the furniture disappeared. But, some pieces can still be found. (pictures by Don Hubbard)

### Club Discounts Available

Over the years, certain businesses have offered a variety of discounts to our membership. Below is a current list of companies that offer some type of discount for products and services.

- |                         |                               |
|-------------------------|-------------------------------|
| Woodcraft               | 10% off on meeting night      |
|                         | Norfolk (757) 466-1166        |
| Sure Set Saw            | 13% Discount                  |
|                         | Chesapeake (757) 420-7991     |
| Cabinet Makers Hardware | Contractor’s Price            |
|                         | Virginia Beach (757) 490-1185 |
| Wurth Woodgroup         |                               |
|                         | Norfolk (757) 858-3908        |
| Scroll-it Service       |                               |
|                         | Portsmouth (757) 237-6867     |
| Sherwin Williams Paint  | 15% Discount                  |
|                         | All stores in Hampton Roads   |



## Program Highlights From Our April 2009 Meeting (cont'd)

**Editor's Note:** Show and Tell was postponed at the April meeting. We encourage everyone to bring their items again for the May meeting.



The above and below pictures are from a piece from Mr. Arnold's collection. It is a reproduction of a Norfolk pie plate table. The carvings were done by hand by the Merlo family of Norfolk. The chair to the left is a restored piece that is crafted in the Norfolk style as well. (pictures by Don Hubbard)



### Woodworking on Television

There are a number of woodworking shows on cable and satellite these days for those of you who subscribe to these services. On PBS, Saturday at 8:00AM on WHRO, we can find Norm and the New Yankee Workshop at his new time. At 3:30PM on Saturday, the New Yankee Workshop is broadcast on the North Carolina PBS. This is followed by the Woodwright Shop at 4:00PM.

Also, if you get the Create Channel (Cox Channel 109), there are multiple showings of the New Yankee Workshop: Tuesday (4:30PM & 10:30PM); Wednesday (4:30AM); Thursday (4:30PM & 10:30PM); Friday (4:30AM).

Recently, The Learning Channel has started airing a show called "Saw for Hire". It is about a tree surgeon and his work to remove trees. Although there is not much woodworking, one can certainly get an idea of what is involved taking down a big tree. Currently, the show air on Thursday nights at 9PM and 9:30PM on Channel 30 on Cox Cable.

If you know of any other shows, please pass on the information.